

# IDEAL Version: ID13\_0C\_14

IDF

ARC8A-AA      id13\_0c\_02

Format: Beach VISION Service RM Log

Vertical Scale: 1:200

Graphics File Created: 28-Nov-2008 05:27

## PIP SUMMARY

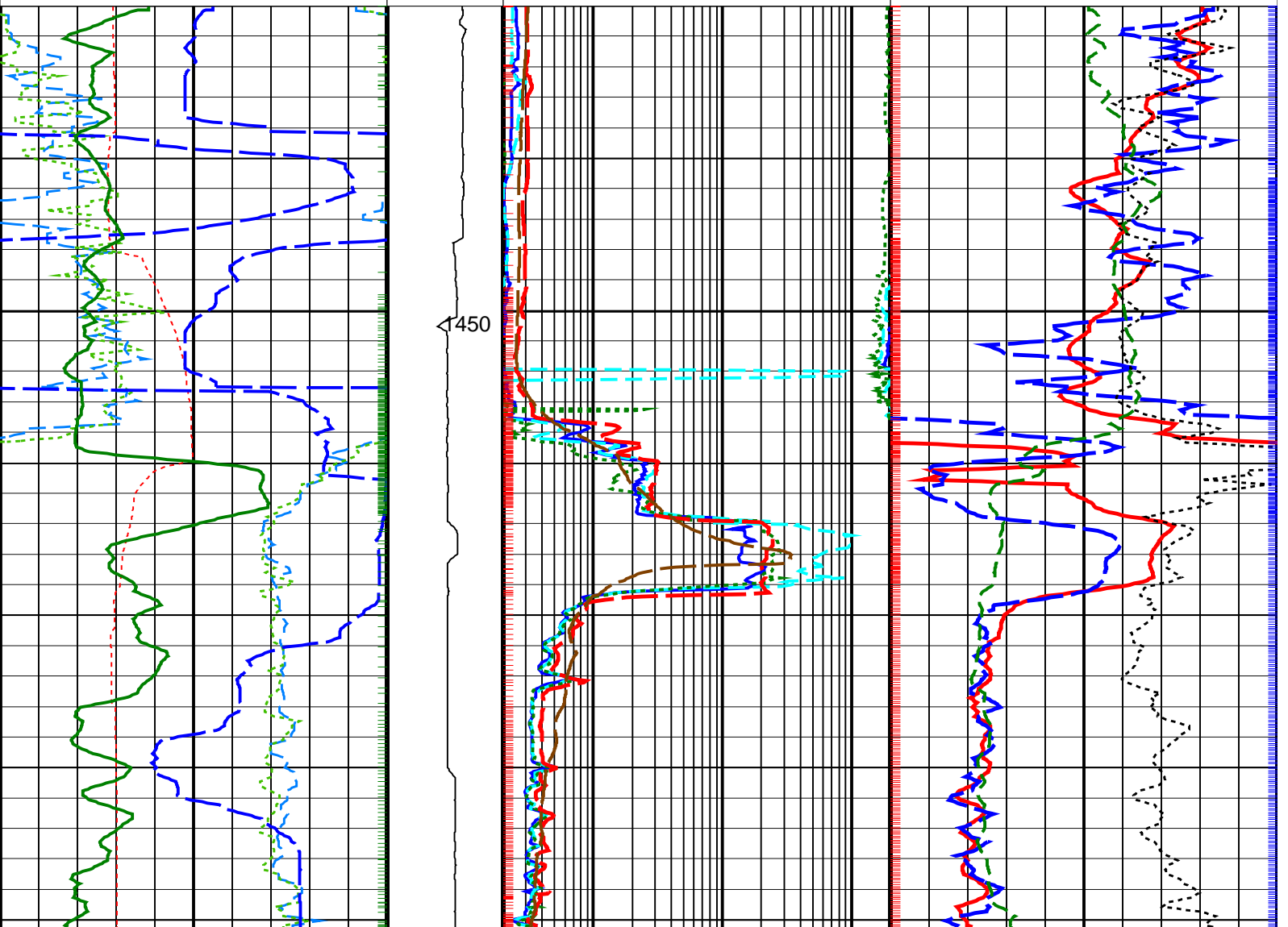
Density Samples †

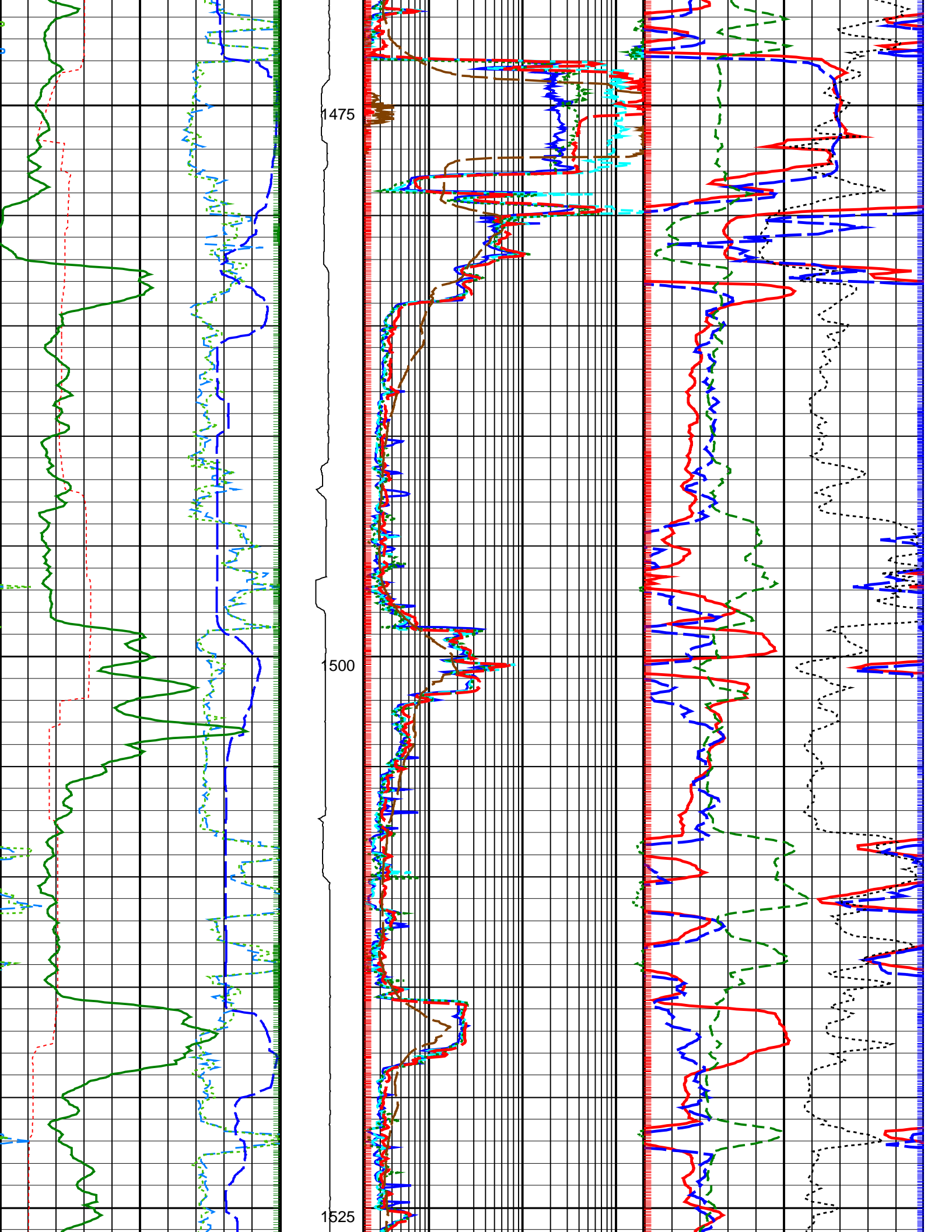
Neutron Samples †

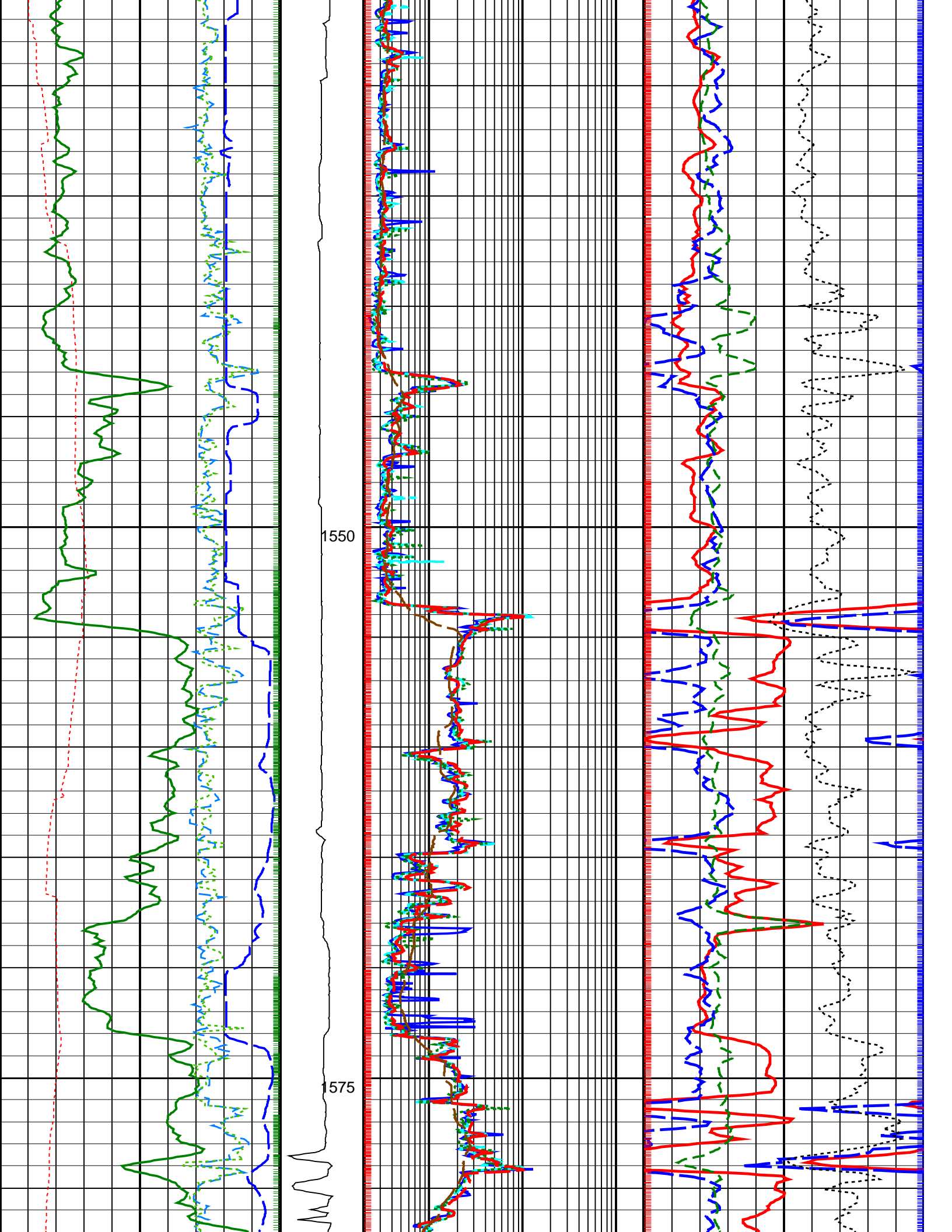
† Gamma Ray Samples

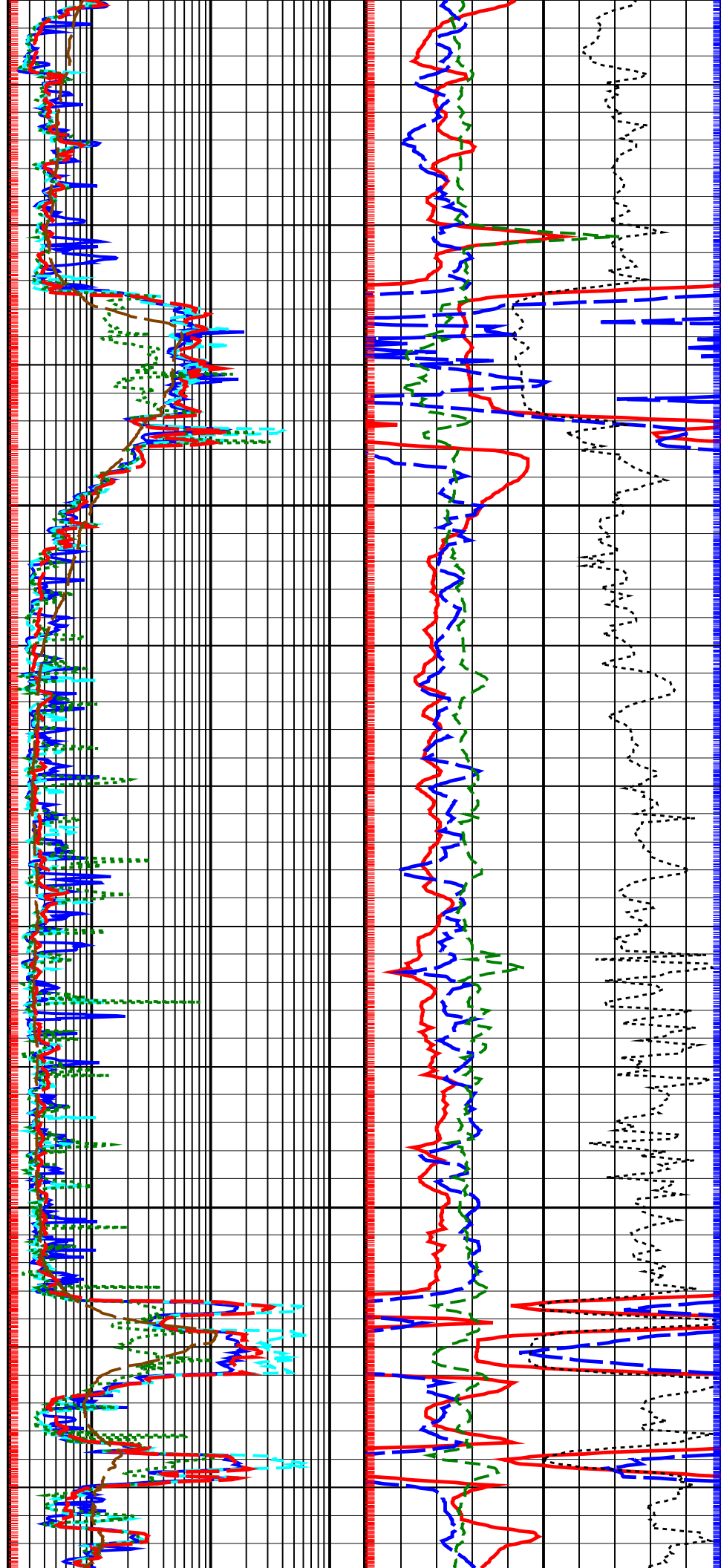
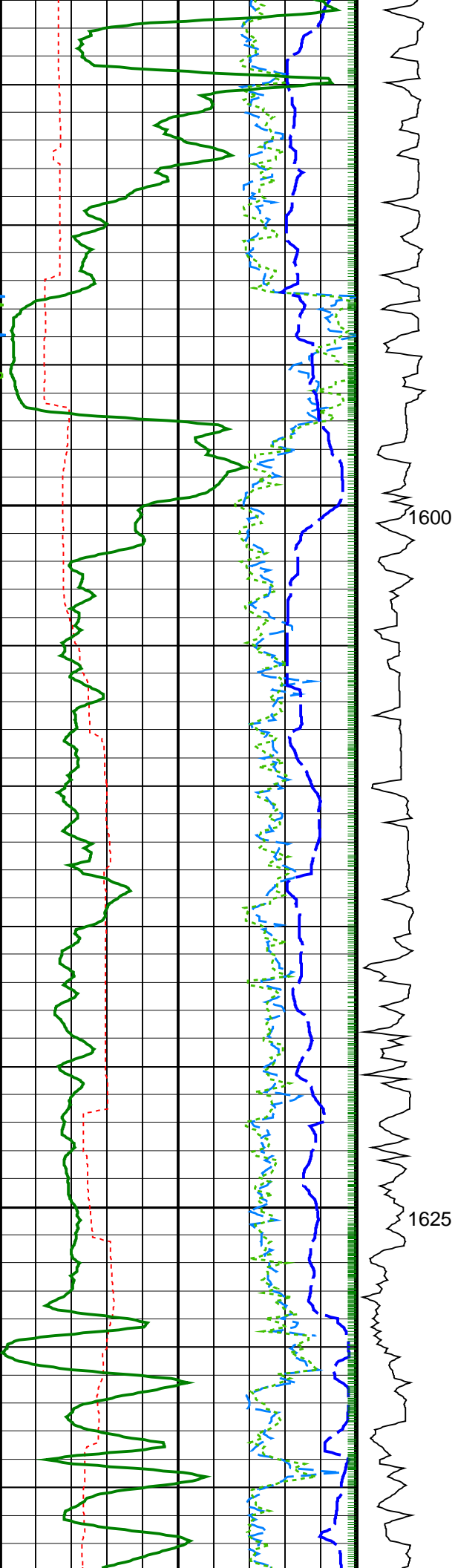
† Ring Samples

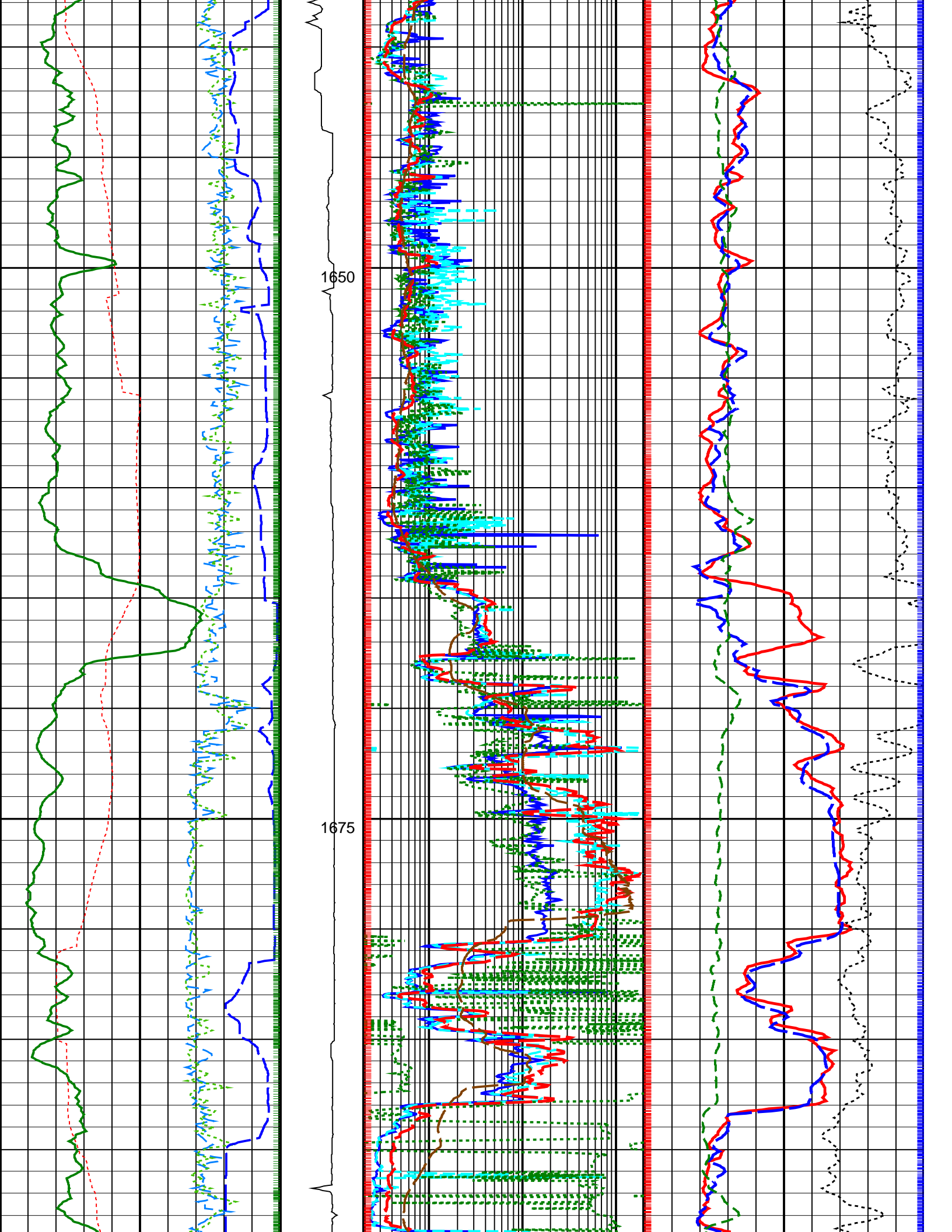
<p><b>Rate of Penetration, Averaged over Last 5ft (ROP5_RM)</b> (M/HR)      200      0</p>	<p><b>Bit Resistivity (RES_BIT)</b> (OHMM)      0.2      200</p>	
<p><b>RAB Gamma Ray (GR_RAB)</b> (GAPI)      0      200</p>	<p><b>Ring Resistivity (RES_RING)</b> (OHMM)      0.2      200</p>	<p><b>Bulk Density Correction (DRHO)</b> (G/C3)      -0.25      0.25</p>
<p><b>Vertical Hole Diameter (VERD)</b> (IN)      6      16</p>	<p><b>Shallow Button Resistivity (RES_BS)</b> (OHMM)      0.2      200</p>	<p><b>Photoelectric Factor (PEF)</b> (----)      0      10</p>
<p><b>Horizontal Hole Diameter (HORD)</b> (IN)      6      16</p>	<p><b>Medium Button Resistivity (RES_BM)</b> (OHMM)      0.2      200</p>	<p><b>Thermal Neutron Porosity (TNPH)</b> (PU)      45      -15</p>
<p><b>Density Time After Bit (TAB_DEN)</b> (HR)      0      10</p>	<p><b>ADN Rotational Speed (RPM_ADN)</b> (RPM)      0      250</p>	<p><b>Deep Button Resistivity (RES_BD)</b> (OHMM)      0.2      200</p>
		<p><b>Bulk Density (RHOB)</b> (G/C3)      1.95      2.95</p>

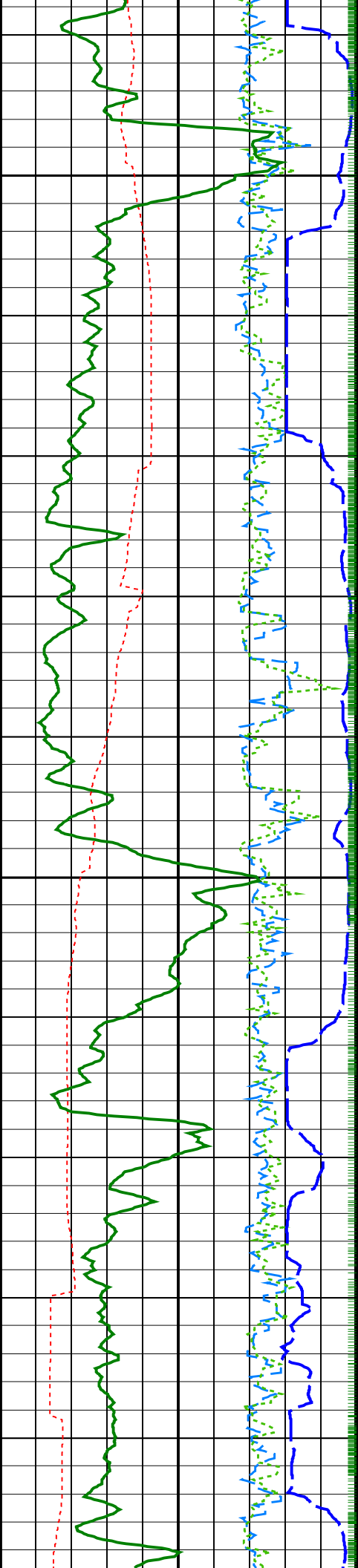






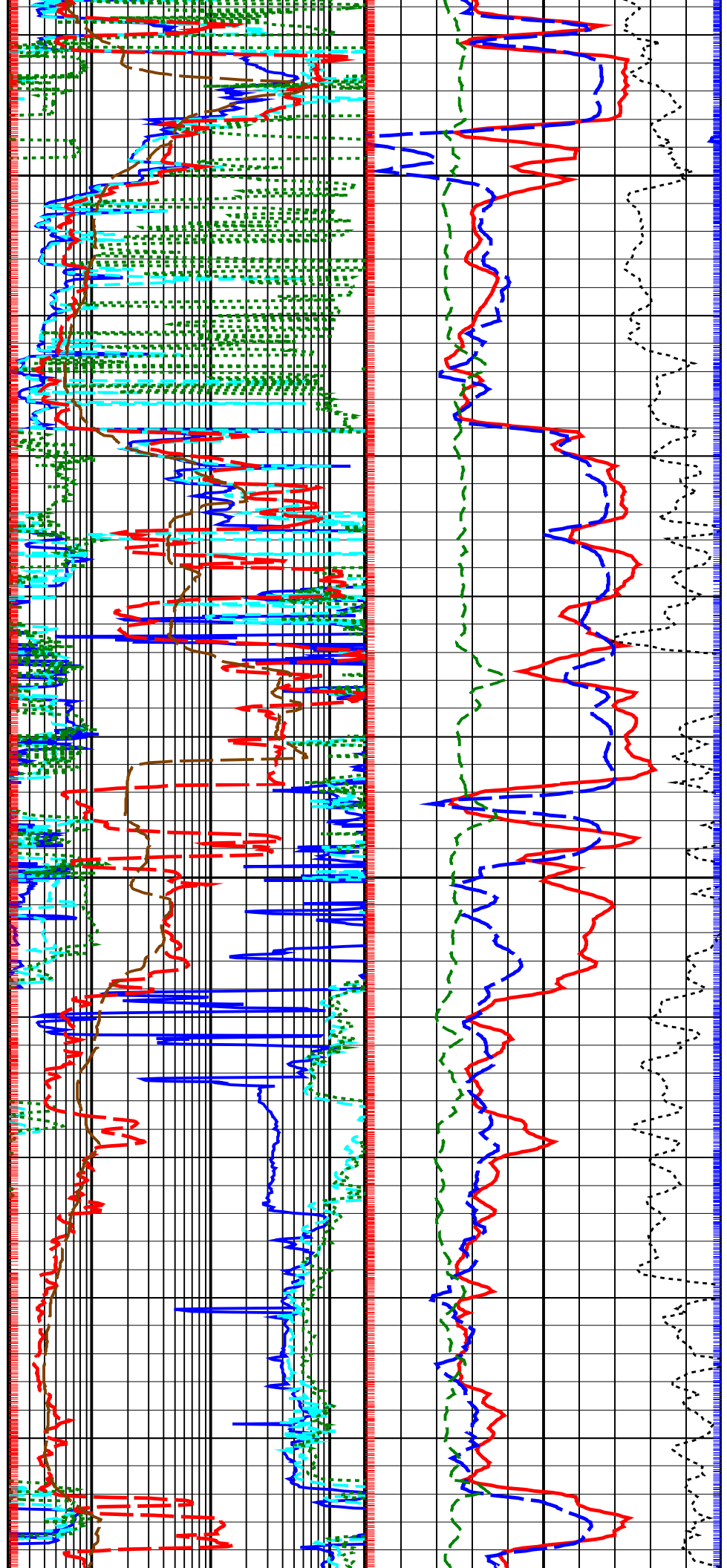


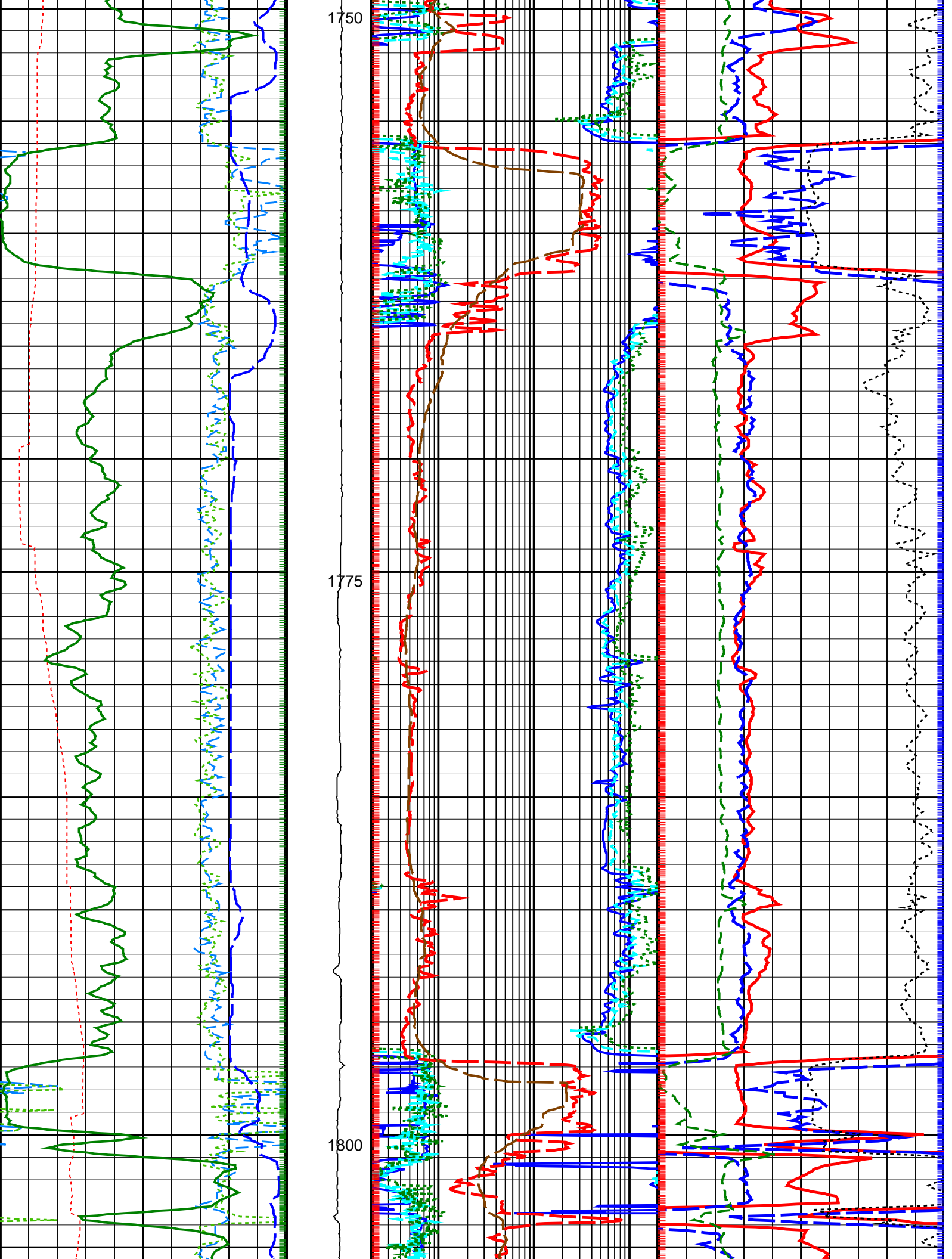


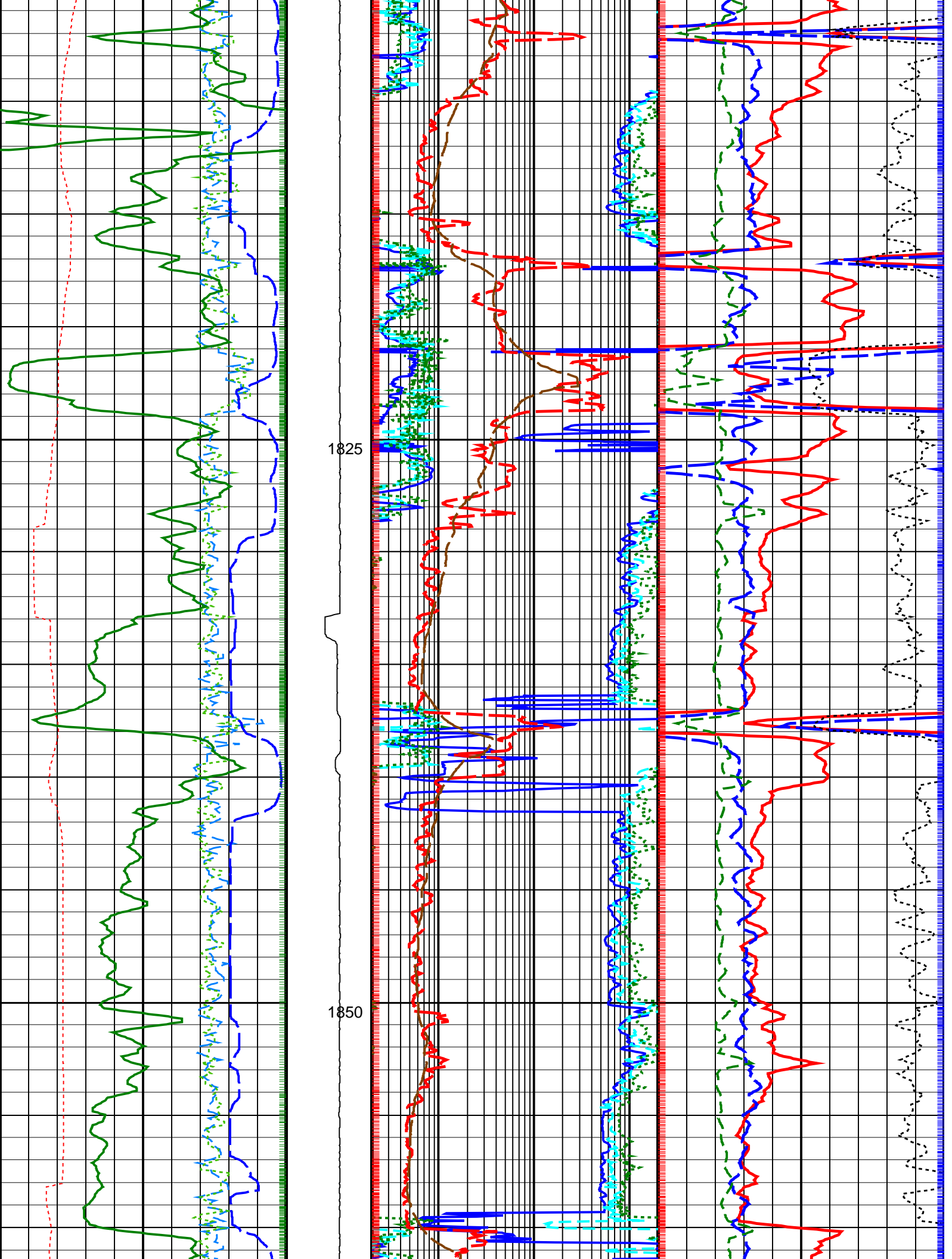


1700

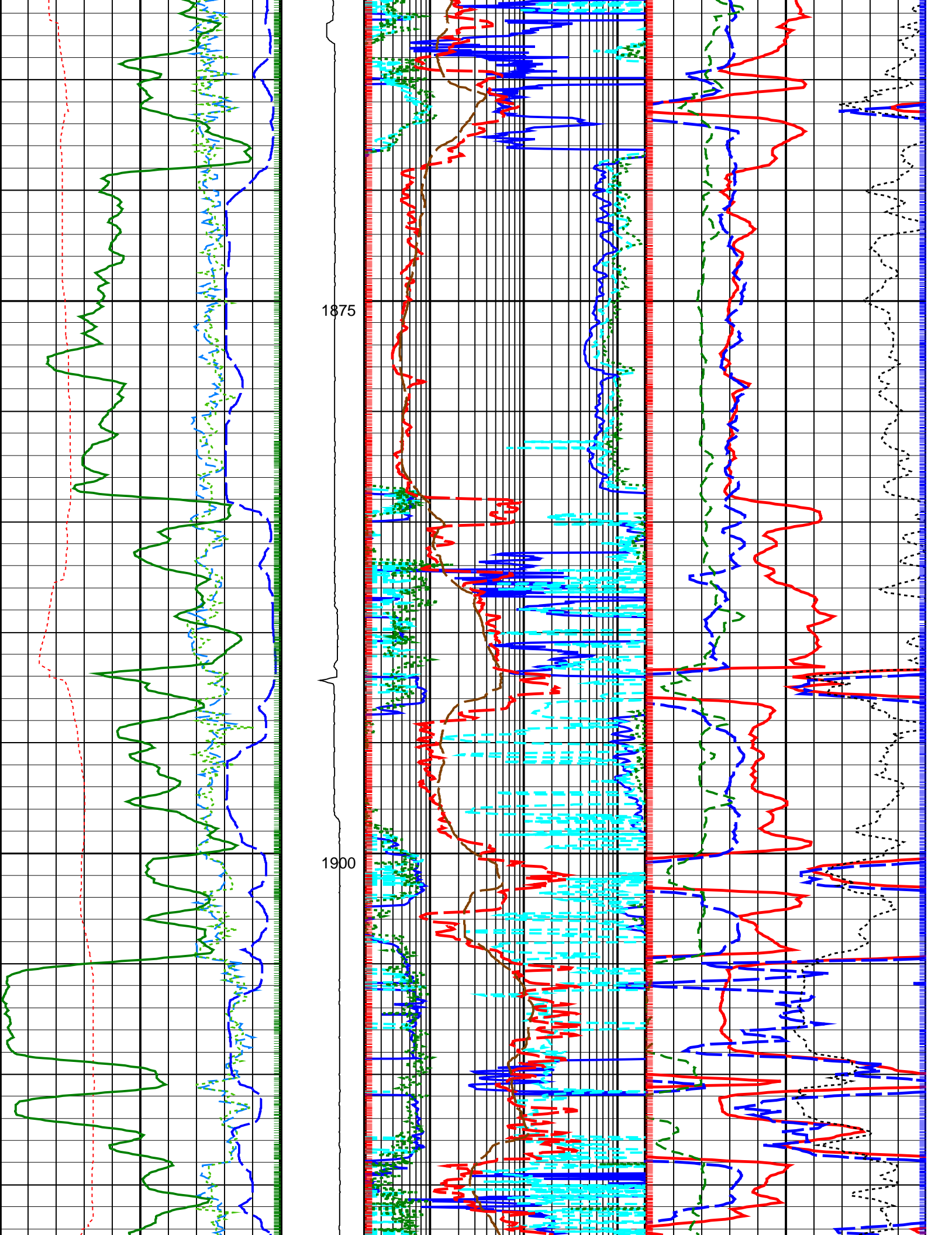
1725

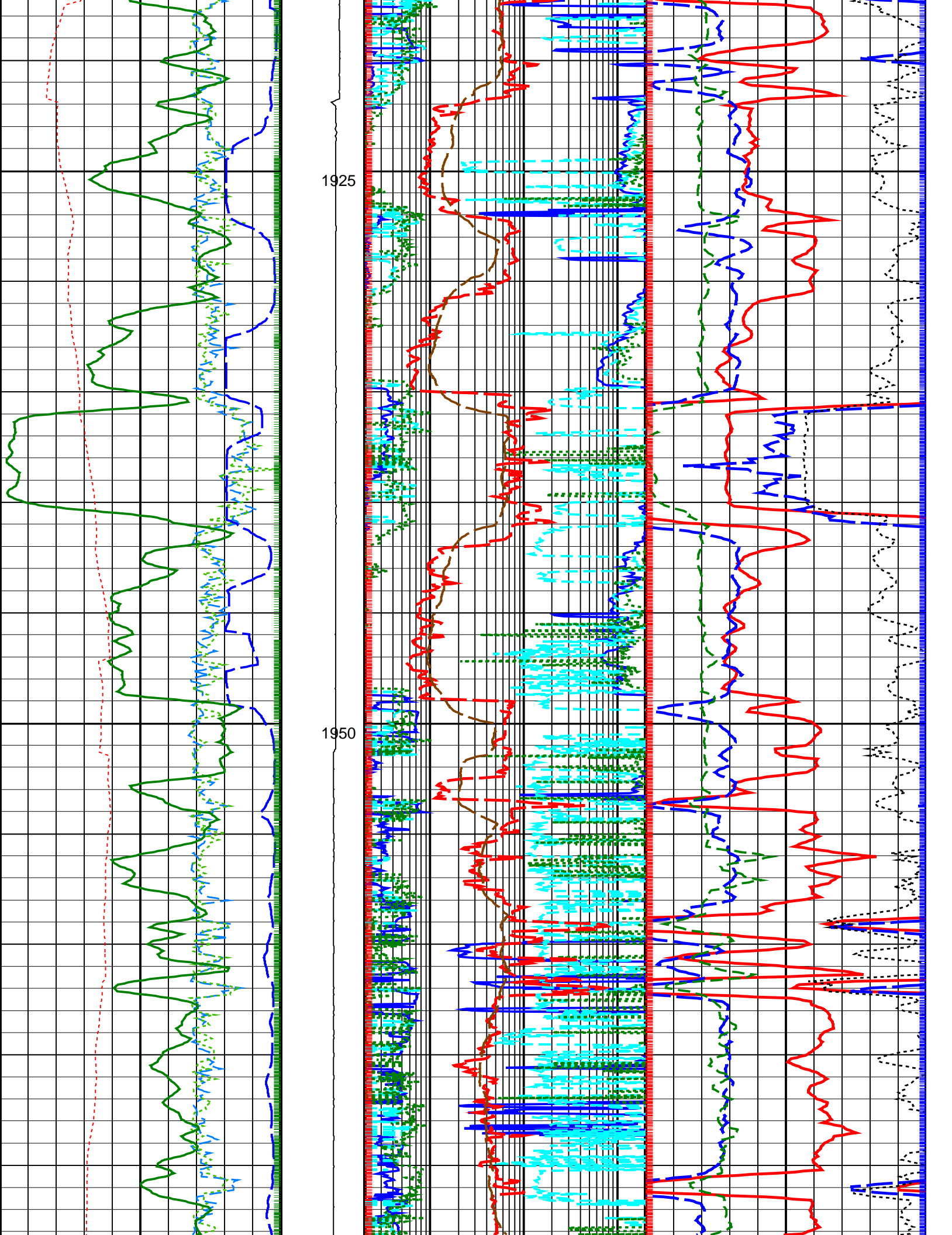


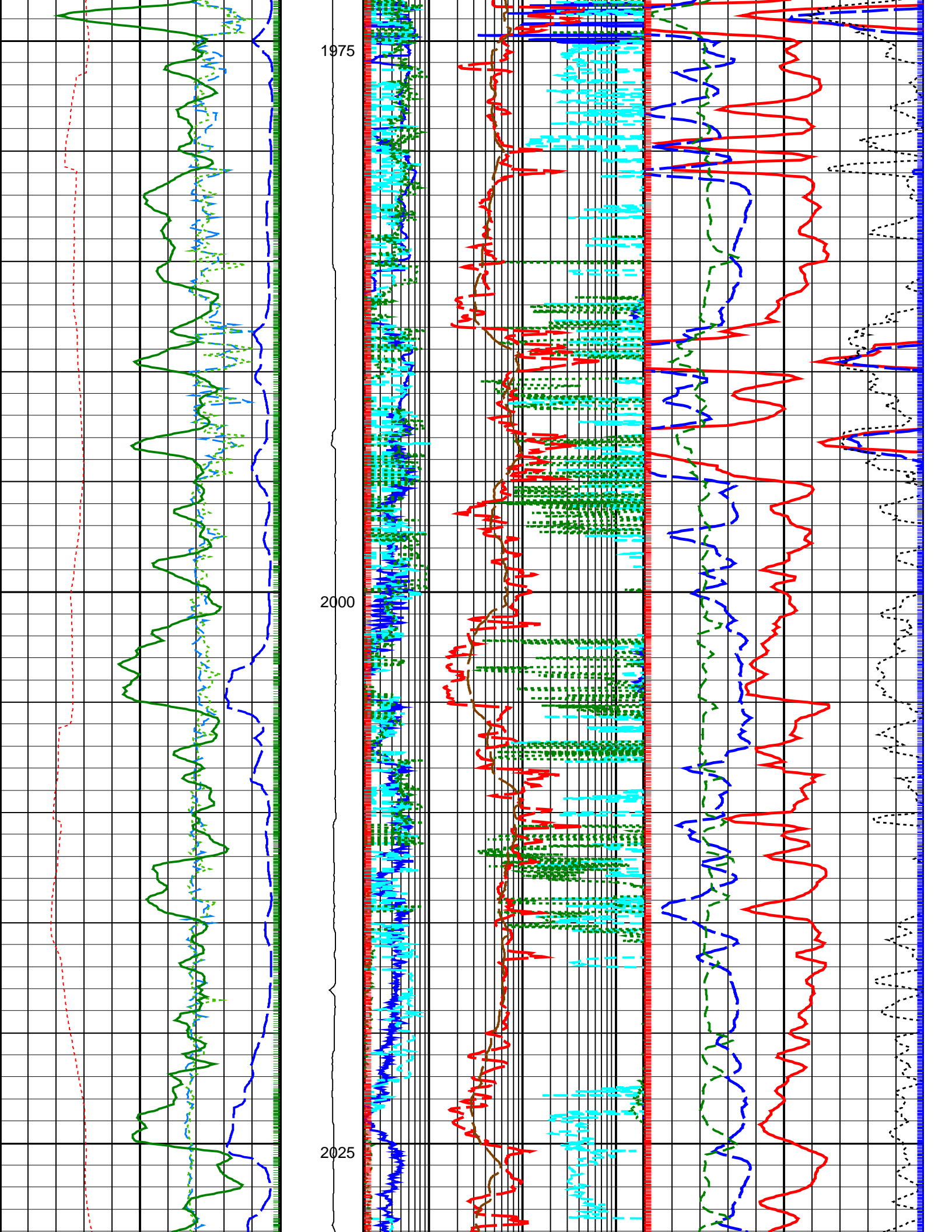


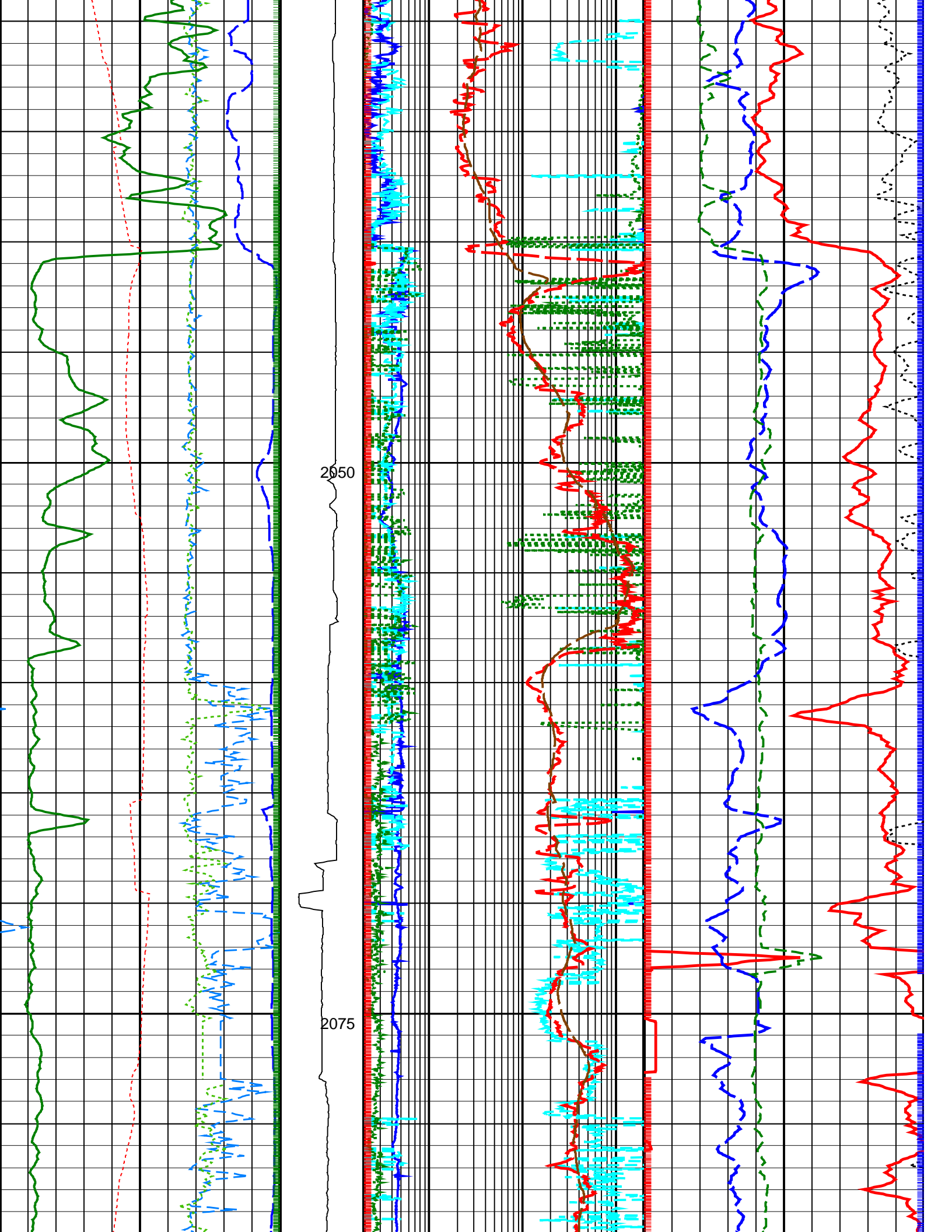


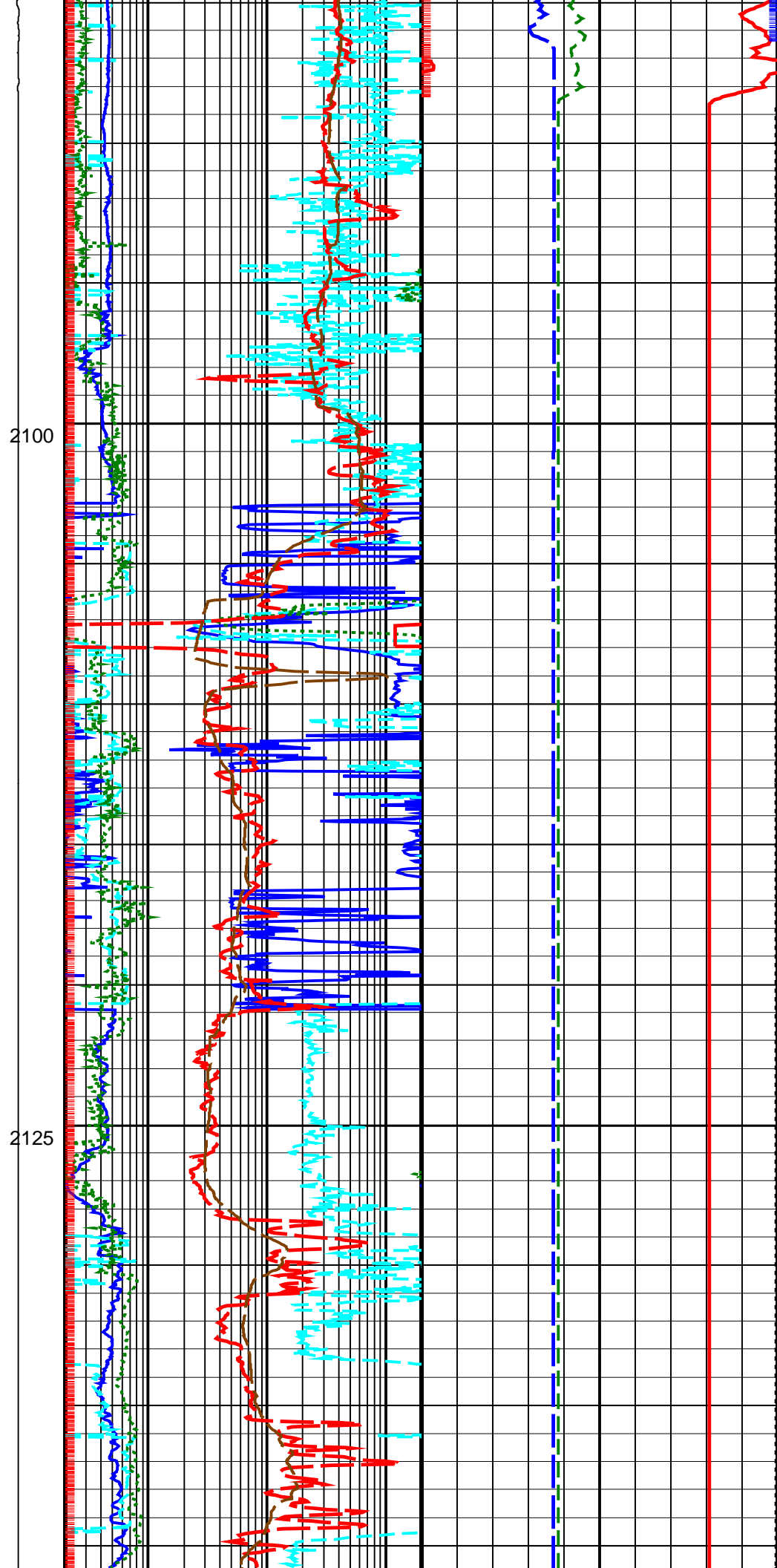
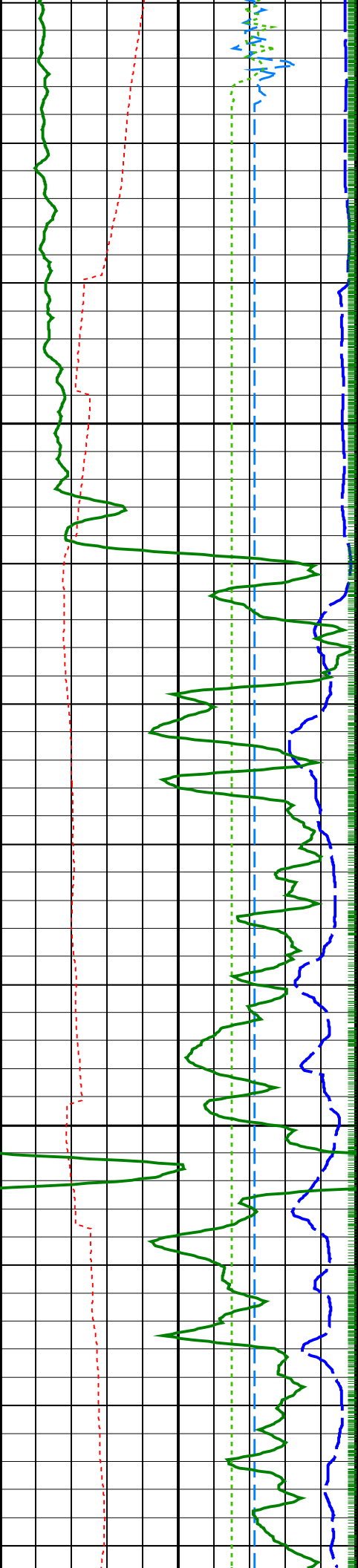


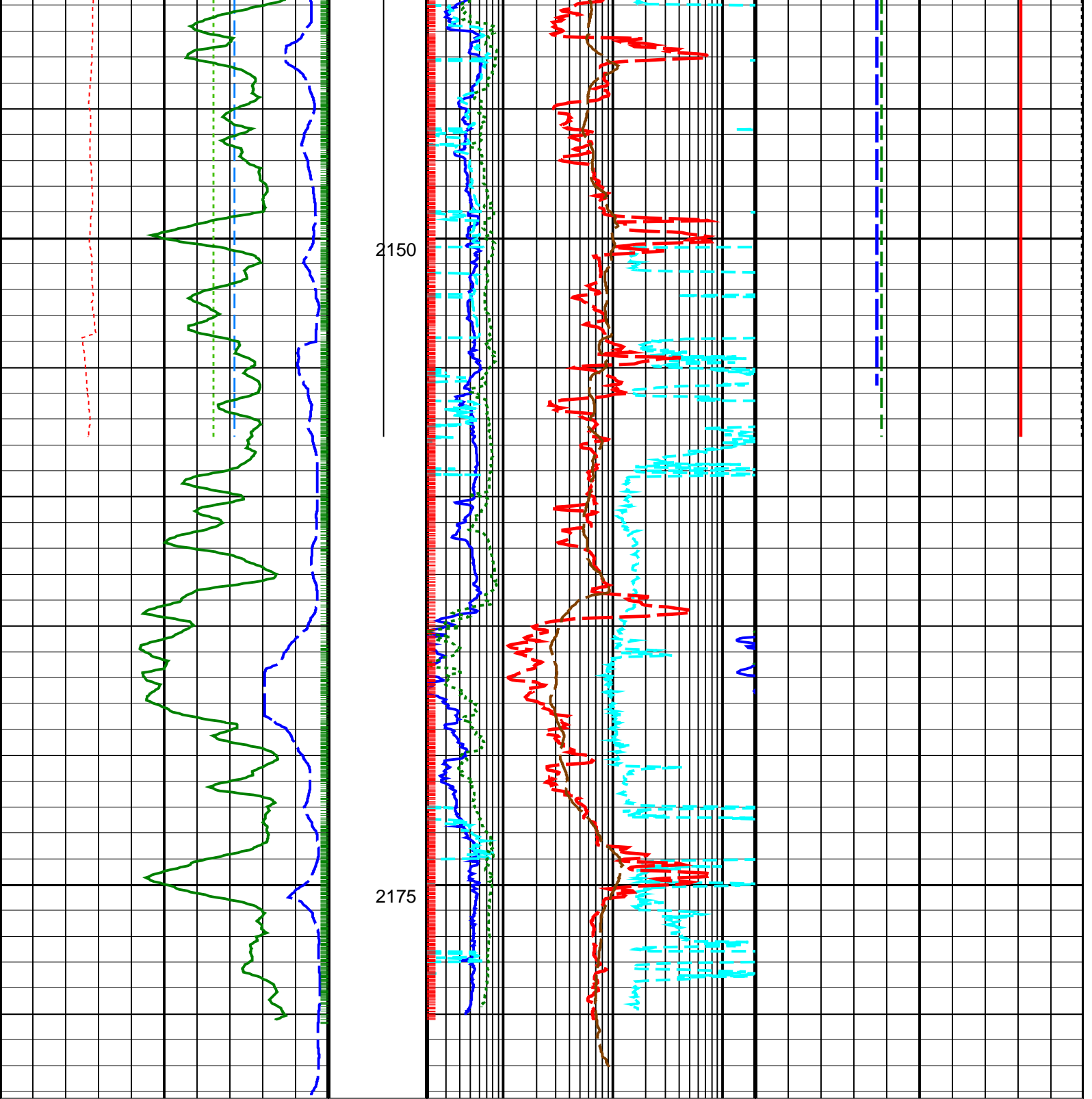












<b>Density Time After Bit (TAB_DEN)</b> (HR)	<b>ADN Rotational Speed (RPM_ADN)</b> (RPM)	<b>Deep Button Resistivity (RES_BD)</b> (OHMM)	<b>Bulk Density (RHOB)</b> (G/C3)
0 10	0 250	0.2 200	1.95 2.95
<b>Horizontal Hole Diameter (HORD)</b> (IN)		<b>Medium Button Resistivity (RES_BM)</b> (OHMM)	<b>Thermal Neutron Porosity (TNPH)</b> (PU)
6 16		0.2 200	45 -15
<b>Vertical Hole Diameter (VERD)</b> (IN)		<b>Shallow Button Resistivity (RES_BS)</b> (OHMM)	<b>Photoelectric Factor (PEF)</b> (----)
6 16		0.2 200	0 10
<b>RAB Gamma Ray (GR_RAB)</b> (GAPI)		<b>Ring Resistivity (RES_RING)</b> (OHMM)	<b>Bulk Density Correction (DRHO)</b> (G/C3)
0 200		0.2 200	-0.25 0.25
<b>Rate of Penetration, Averaged over Last</b>		<b>Bit Resistivity (RES_BIT)</b>	

5ft (ROP5\_RM)  
(M/HR) 0

0.2 (OHMM) 200

PIP SUMMARY

Density Samples +

Neutron Samples +

+ Gamma Ray Samples

+ Ring Samples

IDEAL Version: ID13\_0C\_14

IDF

ARC8A-AA

id13\_0c\_02